

Fine Arts Competition Handbook

Adult & Senior

IMPORTANT DATES

Online or Paper Entry Form deadline	NOTE EARLIER DEADLINE Friday, December 14, 2018
Deliver items to the Florida Center — located at the Florida State Fair. (see page 6)	Thursday, January 24, 2019 10:30 a.m. – 6:00 p.m. Friday, January 25, 2019 10:30 a.m. – 6:00 p.m.
Shipping Information – (see page 6)	Saturday, January 26, 2019 10:30 a.m. – 3:00 p.m.
Items exhibited	February 7 - 18, 2019
Entry pickup	Wed, February 20, 2019 11:00 a.m. – 6:00 p.m. Thursday, February 21, 2019 11:00 a.m. – 6:00 p.m. Additional Pick Up Date Saturday, February 23, 2019 11:00 a.m. – 6:00 p.m.



For more information, contact
Competitive Exhibit Coordinator

Brenda Gregory

Phone: 813-734-2810

Email: brenda.gregory@floridastatefair.com



The Fine Arts Adult Best of Show was James Lemieux of Tampa.

Benefits of Competing?

The Florida State Fair is proud to showcase the bounty of talented people from around the state. Not only do we provide you the opportunity to win ribbons and prize money... it's also a great way to share your talent with a larger community. **In appreciation... all exhibitors receive a FREE ticket to attend the fair.**

Competition Overview

Entry Fee: All Divisions \$3 per entry

Entry Fees are non-refundable

All information regarding **Creative Living Competitions** can also be found at www.floridastatefair.com.

How to enter online – page 6

General Rules – page 7

Paper entry form is available on the last page.

Exhibitors are encouraged to read this handbook in its entirety.

Eligibility

- **The Fine Arts Adult Division** is open to all Florida residents ages 18 and up.
- **The Fine Arts Senior Division** is open to all Florida residents ages 60 and up.
- **The Artist with Disabilities Division** is open to all Florida residents ages 18 and up.
- **Only non-professional artists** in the State of Florida can participate. The non-professional artist is one who does not receive a major portion of his or her income from the sale of his or her art or teaches art classes.

To enter as a group or organization contact Creative Living office at 813-627-4309.

For Youth Fine Arts Competition see the Youth Arts & Craft Competition Handbook.

Entry Rules

NUMBER OF ENTRIES



1. Artists may enter only one of the three Divisions: Adult, Senior, or Artists with Disabilities, but because of the limitations of the display space, **only three (3) items per person** will be accepted for judging. All 3 can be entered in the same class or different classes.

SIZE & PREPARATION GUIDELINES

2. **Two-dimensional artwork cannot exceed 36" in any direction, including the frame.**
3. **All two-dimensional artwork must be received installation-ready.** Most artwork must be framed unless painted on a gallery wrapped canvas. Artwork should be suitably wired using strong screw eyes and wire. *See "Preparing Entry for Exhibition" on page 3.*
4. **Artwork with clip mounts, missing wires, string, scotch tape or saw tooth hangers WILL NOT BE ACCEPTED.**
5. **Three-dimensional artwork cannot exceed 24" in any direction,** unless approved by Competitive Exhibit Coordinator.
6. **All three-dimensional artwork must be received installation-ready.** Provide a base if necessary for structural support.
7. All artwork must be dry when submitted for exhibition.

ORIGINALITY GUIDELINES

8. Work must be of the artist exhibiting, no teacher assisted work
9. **All work must be original.** The artist's source material must be original and not derived from a published image that were not created by the artist. "Original" means that painting is the artist's own composition in concept and design, not copied in whole or in part from another artist's or photographer's work, or painted in a class or work shop with the help or direction of an instructor. Collage is acceptable if it is created from material created by the artists.



NOTE: Reproduction from Old Masters class is found in the Decorative Arts Handbook.

GENERAL ENTRY RULES

10. Each adult exhibitor will receive one (1) daily admission ticket to the Fair.
11. Entries previously exhibited in the Florida State Fair may not be submitted for competition.
12. Exhibited work must be completed within the last two (2) years.

13. Entries must have been prepared/made/processed by the exhibitor in whose name they are entered.
14. In keeping with the Florida State Fair's family orientation; items of an offensive, controversial or objectionable nature or subject matter will not be accepted.

Judging & Awards

The Fair ensures that the judges we employ are knowledgeable in the fine arts and will be impartial. Judges reserve the right to reassign entries to a more appropriate division or class. Judging will be done using a scorecard to assist in keeping decisions as objective as possible. **The decision of the judge(s) is final.**

If, at the Judge's discretion, an entry does not merit a placing, the Judge shall give no award under any circumstance. This rule applies whether there is one or more exhibits in the Class.

Awards Information

First Place – State Fair Ribbon \$40

Second Place – State Fair Ribbon \$30

Third Place – State Fair Ribbon \$20

Best of Show – State Fair Ribbon \$100

Best of Show Awards will be chosen from the first-place winners in each Adult and Senior Division.

People Choice Award – State Fair Ribbon \$35

Honorable Mention Ribbons may be awarded, at the discretion of the judge(s).

Judging Criteria

Composition/Design

Arrangement and balance of visual elements

Originality & Creativity

Impact on viewer, unique approach to subject matter... Is there a WOW factor?

Technical Skills

Technique, craftsmanship, Excellence in skills in the making of the piece. Mastery if the medium.

Presentation

Prepared and mounted neatly and securely to meet requirements

The Fine Arts Exhibition will be held in the Florida Center during the Florida State Fair. The exhibit will be open for your viewing pleasure.



Preparing Entry for Exhibition

Fine Arts (2D)

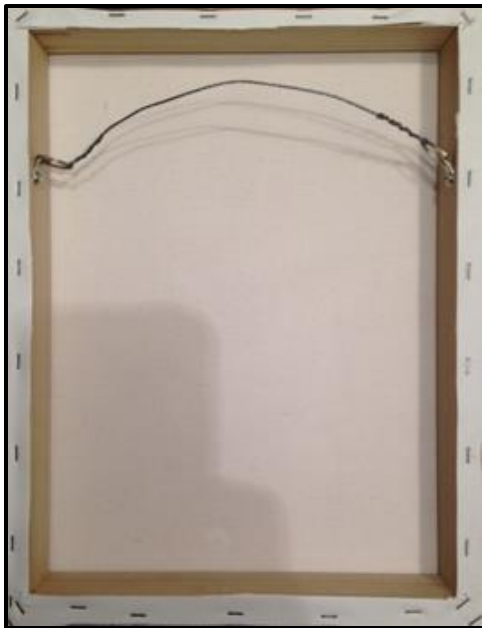
(Items that can be hung on wall)

Artwork should be framed excluding gallery wrapped canvases.

- **Framed items** must be ready to hang using secure screw eyes and wire.
- **Gallery wrapped canvases** should be ready to hang using secure screw eyes and wire.

Gallery wrap is a method of stretching an artist's canvas so that the canvas wraps around the sides of the stretcher bar or strainer bars and is secured to the back of the wooden frame, where the hardware (staples, tacks, etc.) is hidden.

Wiring of gallery wrapped canvases



LARK'S HEAD KNOT

Also called...
Lark's foot, Cow hitch, Girth hitch, Ring hitch, Lanyard hitch, Bale Sling hitch, Baggage Tag Loop, Tag Knot, Deadeye hitch, Running eye

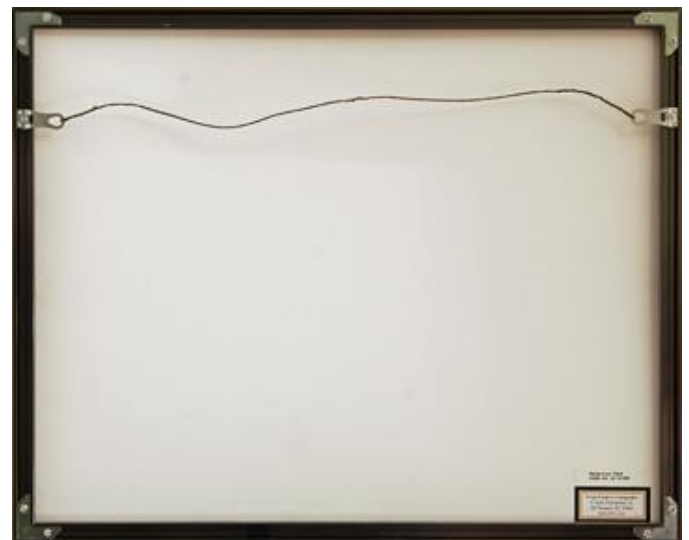


Fine Arts (3D)

(Items that sit on pedestal or shelf)

- **All three-dimensional artwork must be received installation-ready.** Provide a base if necessary for structural support. The Fair will provide pedestals and glass cases to protect the work.

Examples of wire hangers on frames



Fine Arts – Divisions & Classes

Definitions

All Work must be original. The artist's source material must be original and not derived from a published image that were not created by the artist. "Original" means that painting is the artist's own composition in concept and design, not copied in whole or in part from another artist's or photographer's work, or painted in a class or work shop with the help or direction of an instructor.

Acrylic & Oil Media Paintings are defined as 2D paintings painted on stretched or non-stretched canvas, wood, clay board, or other hard surface that is ready to hang using secure eyes and wire.

Acrylic Pouring should be entered under Class 7, unless it is a part of another painting class, for example it is used in a background in a landscape.

Water Media Painting is limited to water soluble water media (no water soluble oil products or pastels). Paintings may be created on all surfaces specifically for water media (i.e. paper, clay board or synthetic surfaces like Yupo and Tyvek®, illustration board, paper mounted on board, or flat upstretched water color canvas). The Paintings can be framed, matted, under glass or Plexiglas or varnished but must be ready to hang using secure eyes and wire.

Miniature Paintings can be no larger than 24 square inches, ready to display on an easel.

Reproduction from Old Masters class is found in the Decorative Arts Handbook.

Drawing includes graphite pencil, charcoal, color pencil, etc., on paper, ready to hang using secure eyes and wire.

Pen & Ink: black & white, color, or zentangle

Pastel includes soft & oil pastel.

Collage is acceptable if it is created from material created by the artists.

Digital Art uses digital technology as an essential part of the creative or presentation process.

Recycled Art must use at least 80% recycled materials.

2D & 3D Mixed Media uses more than one medium.

Fine Arts – Adult (Ages 18 +) Division 45.101

Class Description

Paintings – Acrylic & Oil Media

- 1 Painting – People (Portraits & Figures)
- 2 Painting – Scene
(Scapes - Land, Sea, Sky & City)
- 3 Painting – Still Life & Things
- 4 Painting – Flowers, Plants & Trees
- 5 Painting – Animals
(Wildlife, Pets & Farm Animals)
- 6 Painting – Whimsical
- 7 Painting – Abstract & non-representational

Paintings – Water Media

- 8 Water Media – People (Portraits & Figures)
- 9 Water Media Scene
(Scapes - Land, Sea, Sky & City)
- 10 Water Media – Still Life & Things
- 11 Water Media – Flowers, Plants & Trees
- 12 Water Media – Animals
(Wildlife, Pets & Farm Animals)
- 13 Water Media – Whimsical
- 14 Water Media – Abstract & non-representational

Other Two-Dimensional Art

- 15 Miniature Paintings (all mediums)
- 16 Drawing
- 17 Pen & Ink
- 18 Alcohol-Based Inks & Markers
- 19 Pastel
- 20 Encaustic
- 21 Printmaking
- 22 Collage
- 23 Digital Art
- 24 2D Mixed Media

Other Three-Dimensional Art

- 25 Recycled Art
- 26 Sculpture
- 27 3D Mixed Media

SPECIAL Plein Air Contest

Paint Out ... at your Florida State Fair

The Florida State Fair is looking for talented Plein Air painters to spend the day documenting the exciting activities at this year's Fair.

See Special Competitions in October on the Creative Living Competitions Webpage.



Fine Arts – Divisions & Classes

Fine Arts – Senior (Age 60+) Division 45.201

Class Description

Paintings – Acrylic & Oil Media

- 1 Painting – People (Portraits & Figures)
- 2 Painting – Scene
(Scapes - Land, Sea, Sky & City)
- 3 Painting – Still Life & Things
- 4 Painting – Flowers, Plants & Trees
- 5 Painting – Animals
(Wildlife, Pets & Farm Animals)
- 6 Painting – Whimsical
- 7 Painting – Abstract & non-representational

Paintings – Water Media

- 8 Water Media – People (Portraits & Figures)
- 9 Water Media Scene
(Scapes - Land, Sea, Sky & City)
- 10 Water Media – Still Life & Things
- 11 Water Media – Flowers, Plants & Trees
- 12 Water Media – Animals
(Wildlife, Pets & Farm Animals)
- 13 Water Media – Whimsical
- 14 Water Media – Abstract & non-representational

Other Two-Dimensional Art

- 15 Miniature Paintings (all mediums)
- 16 Drawing
- 17 Pen & Ink
- 18 Alcohol-Based Inks & Markers
- 19 Pastel
- 20 Encaustic
- 21 Printmaking
- 22 Collage
- 23 Digital Art
- 24 2D Mixed Media

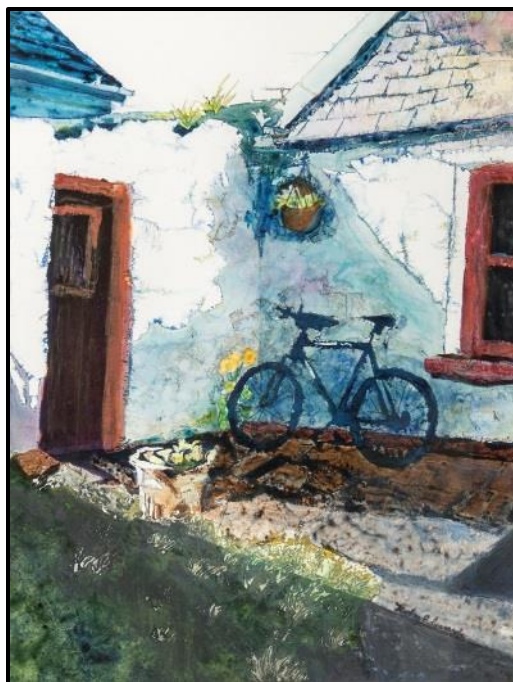
Other Three-Dimensional Art

- 25 Recycled Art
- 26 Sculpture
- 27 3D Mixed Media

Fine Arts – Artist with Disabilities (Age 18 +) Division 45.601

Class Description

- 1 Painting (Acrylic or Oil media)
- 2 Water Media Painting
- 3 Drawing
- 4 Pen & Ink
- 5 Alcohol-Based Inks & Markers
- 6 Pastel
- 7 Encaustic
- 8 Printmaking
- 9 Collage
- 10 Digital Art
- 11 2D Mixed Media
- 12 Recycled Art
- 13 Sculpture
- 14 3D Mixed Media



The Fine Arts Senior Best of Show was Kathy Edwards from Tampa.

SPECIAL Plein Air Contest

Paint Out ... at your Florida State Fair

The Florida State Fair is looking for talented Plein Air painters to spend the day documenting the exciting activities at this year's Fair.

See Special Competitions in October on the Creative Living Competitions Webpage.




How to Enter Online

We encourage you to enter online, using ShoWorks. The Florida State Fair has implemented ShoWorks, an on-line entry program. ShoWorks is an industry standard used by over 50 fairs nationally. This user-friendly program can be trusted to accurately enter you into our competitions and allows for efficient communications via e-mail. We are excited to have ShoWorks to better facilitate entering Florida State Fair competitions.

- **Take a moment to look through this Competition Handbook to see which division and class your entry is eligible to compete in.** Then, follow the easy steps listed below to enter the competition you have chosen.
- **To Enter Online using ShoWorks.**
Go to www.floridastatefair.com and at the top of the home page select the **State Fair** TAB and you will see in the dropdown list a link for **Creative Living Competitions**. Select the **Enter Online** button at the top of that page.
- **Everyone must register as a new exhibitor each year.**
- **Note that sessions expire after 20 minutes** of inactivity, so “save the cart” if you plan on leaving the computer for more than 20 minutes.
- When registering, please verify that all information that you entered into ShoWorks is correct. Please pay special attention and use proper spelling, capitalization, full names of cities/counties, no abbreviations and correct contact and mailing outlets.
- You can pay fees with a credit card or mail in a check.

Mailing Paper Entry Forms

- **Entry Forms must be postmarked by Friday, December 14, 2018.** 
Failure to complete any portion of entry form may result in disqualification.

Mail Entry Form to:

Creative Living Competitions – Fine Arts
Florida State Fair
P.O. Box 11766
Tampa, FL 33680

Make checks payable to: Florida State Fair Authority

Delivery of Entries

- **All entries must be delivered to the Florida State Fair Authority on either:**
Thursday, January 24, 10:30 a.m. – 6:00 p.m.
Friday, January 25, 10:30 a.m. – 6:00 p.m.
Saturday, January 26, 10:30 a.m. – 3:00 p.m.

Deliver entries to:

Florida State Fair Authority
Florida Center Bldg.

Enter off of Orient Road thru the Service entrance on the west side of the fairgrounds

Map with directions to the Florida Center available on the **Creative Living Competitions** webpage.

- Entries arriving at the Fairgrounds after Delivery and Shipping Deadlines may be disqualified.

Shipping Information

- Shipped entries must arrive no later than **Friday, January 18, 2019.**
- Include a **Shipping Form**, available at www.floridastatefair.com on the **Creative Living Competitions** webpage. Shipments missing form will be returned COD after the Fair.
- **Shipped entries, with Shipping Form to:**
Florida State Fair Authority –
Fine Arts Competition
4800 US Hwy 301 North
Tampa, FL 33610.
- Entries are shipped back to exhibitors after the Fair in the same container. Use reusable shipping containers.
- Return shipping costs are the responsibility of the entrant.
- Return shipping options: COD, Prepaid shipping label, UPS or FedEx account.

Retrieving Entries

- See the calendar for Pick Up dates, times and locations (page 1).
- Entries not picked up on designated dates can be arranged for special pick up appointment by emailing brenda.gregory@floridastatefair.com.
- All entries not claimed by September 1st of the same year will be recycled, disposed or donated through our program department.

General Rules

Disclaimer

Please be advised that competitive exhibits are entered at the exhibitor's risk. The Florida State Fair does not insure and is not responsible for any loss, damage, or theft of entries, even if the loss, damage, or theft occurs as the result of the handling of the exhibit by staff, volunteers, contractors and/or visitors. If the exhibitor desires insurance coverage, this coverage should be secured from a personal insurance agent prior to entry and the policy written to cover the period of exhibition and transportation. Reasonable care will be taken to prevent loss or damage to exhibits. Unauthorized persons are not permitted in the building after closing hours.

Division/Class Cancellation

The Florida State Fair management reserves the right to return entries and cancel any division or class in which, in its judgment, the entries are insufficient to secure adequate competition.

Entry Errors

Florida State Fair management is not responsible for finding errors in entries. Exhibitors are responsible for any and all errors which were submitted online or on entry and summary forms. No exhibitor shall be entitled to an award which has been disallowed as the result of his own error. The Florida State Fair management shall withhold the payment of awards for exhibits that are ineligible and may recover awards that have been paid for ineligible entries that are disclosed during post audits of Fair records. However, exhibitors with cause are entitled to question the validity of any disallowance. Such exhibitors should inform the Florida State Fair management immediately, in writing, giving their name, address, complete description of the entry and the reason for requesting reconsideration. Requests will not be considered later than ninety (90) days after receiving notice of disallowance.

Substitution

Substitutions may be made in still exhibits only in the same division of the original entry class of the original exhibitor, and may be made only if completed by the entry delivery date. Substitutions must be made at time of delivery check in. The Florida State Fair or the judge may disqualify or transfer to the correct class any entry which is not a true representative of the division or class in which it is entered.

Previously Entered Entry

Any entry that has been exhibited at a previous Florida State Fair is not eligible for entry in the 2019 Florida State Fair. This excludes Horticulture & Aquarium Beautiful entries.

Verification

Exhibitors wishing to verify that the Florida State Fair has received submitted entry forms and fees must include a self-addressed/stamped envelope when submitting entry forms. Online submissions will receive a confirmation code once entries are submitted.

Responsibility

The Florida State Fair shall not be responsible for exhibits remaining on the fairgrounds after designated release times. All still exhibits or display elements remaining on the Fairgrounds after the designated release time will be treated as abandoned property and will be disposed of on or before September 1st of the same year.

Removal of Entries

An exhibitor may not remove his or her entry from the Florida State Fair once it has been accepted. Entries must be on exhibit at the official opening of the Fair or at any other time specified in the Competition Handbook and shall not be removed from the Fairgrounds prior to the release date printed in the handbook, except (at the discretion of the Florida State Fair management) in cases of positive evidence of sickness, accident and/or death, or other circumstances that are in the best interests of the Fair.

Dishonored Checks

A penalty of \$25.00 per dishonored check must be paid if a check in payment of entry fees or other applicable fees is refused by the bank. Only cash, certified check or money orders are acceptable for penalty payment.

Design

The Florida State Fair assumes total design control over the presentation of the exhibits. Entries designed for hanging and not so equipped will be hung in a manner deemed appropriate by the Fair. No exhibit changes will be made once the entries have been displayed. Once an entry has been received by the Florida State Fair, no further handling of entry by exhibitor shall be permitted. Relocation and final placement shall be accomplished by Florida State Fair personnel. Entries requiring assembly/disassembly must include detailed instructions and sketches for assembly/disassembly. Instructions should indicate lifting points, unsecured parts and any other information required for such handling. Where necessary, bank pins will be utilized to attach exhibits for display.

2019 Florida State Fair

Fine Arts Competition Entry Form



Entry Forms must be postmarked by Friday, December 14th, 2018.
Failure to complete any portion of entry form may result in disqualification.

OFFICE USE ONLY

Exhibitor #	_____
Total Fee	_____
Paid	<input type="checkbox"/> YES <input type="checkbox"/> NO
Type	<input type="checkbox"/> Cash <input type="checkbox"/> MO <input type="checkbox"/> Check
Check No.	_____

Please print legibly

Exhibitors Name (First, Last)		Organization
Mailing Address		County
City	State	Zip Code
Phone ()	Email	

What division are you competing in: Adult (ages 18 +) Senior (ages 60 +) Artist with Disabilities (ages 18+)

Entry Fee: Adult, Senior & Artist with Disabilities Division \$3 per entry
Exhibitors may enter up to three (3) entries for judging.

#	DIVISION #	CLASS #	Enter Title of Artwork	FEE
1				
2				
3				
Total Amount Due				\$

I hereby certify that I have read the Florida State Fair General Rules for the Competitive Exhibits Program (Page 7) and the above item(s) is/are entered for exhibition strictly in accordance with these rules, by which I agree to be governed. I also agree that the Florida State Fair may use my name, likeness, or photograph (including, but not limited to photographs of my entry), in any manner relating to my participation in the Competitive Exhibits Program, free of charge and without further notice or consultation.

Signature of exhibitor

Date

Mail Entry Form to:

Creative Living Competitions – Fine Arts
Florida State Fair
P.O. Box 11766
Tampa, FL 33680

Make checks payable to: Florida State Fair Authority